



WILLIAM M. HABERMEHL  
County Superintendent of Schools

# NARRATIVE DIRECTIONS FOR REACHING THE ORANGE COUNTY DEPARTMENT OF EDUCATION

200 KALMUS DRIVE, COSTA MESA, CALIFORNIA 92626 • PHONE (714) 966-4000

**From Riverside toward Newport Beach:**  
Newport-Costa Mesa Freeway (55) south to Baker offramp. Left on Baker to Red Hill. Right on Red Hill to Kalmus. Right on Kalmus to Department of Education. Turn right into the parking lot.

**From Los Angeles toward San Diego:**  
Santa Ana Freeway (5) south to Newport-Costa Mesa Freeway (55). South on Newport-Costa Mesa Freeway to Baker offramp. Left on Baker to Red Hill. Right on Red Hill to Kalmus. Right on Kalmus to Department of Education. Turn right into the parking lot.

**From Long Beach toward San Diego:**  
San Diego Freeway (405) south to Bristol. Right on Bristol to Baker. Left on Baker to Red Hill. Right on Red Hill to Kalmus. Right on Kalmus to Department of Education. Turn right into the parking lot.

**From Corona del Mar toward Newport-Costa Mesa Freeway:**  
Corona del Mar Freeway (73) north to Newport-Costa Mesa Freeway (55). North on Newport-Costa Mesa Freeway to Baker offramp. Right on Baker to Red Hill. Right on Red Hill to Kalmus. Right on Kalmus to Department of Education. Turn right into the parking lot.

**From Corona del Mar – PCH:** Pacific Cost Highway to Jamboree. Right on Jamboree to Bristol. Left on Bristol to Red Hill. Right on Red Hill to Kalmus. Left on Kalmus to Department of Education. Turn right into the parking lot.

**From San Diego toward Los Angeles:**  
San Diego Freeway (405) to Newport-Costa Mesa Freeway (55). South on Newport-Costa Mesa Freeway to Baker offramp. Left on Baker to Red Hill. Right on Red Hill to Kalmus. Right on Kalmus to Department of Education. Turn right into the parking lot.

### Building A

- Superintendent
- Deputy Superintendent
- Board Room
- Business Services
- Facilities/Purchasing
- Human Resources & Support Services
- Legal Services

### Building C

- Informational Services
- Facility Operations
- Media Services
- Special Education Services
- Kalmus Kitchen

### Building B

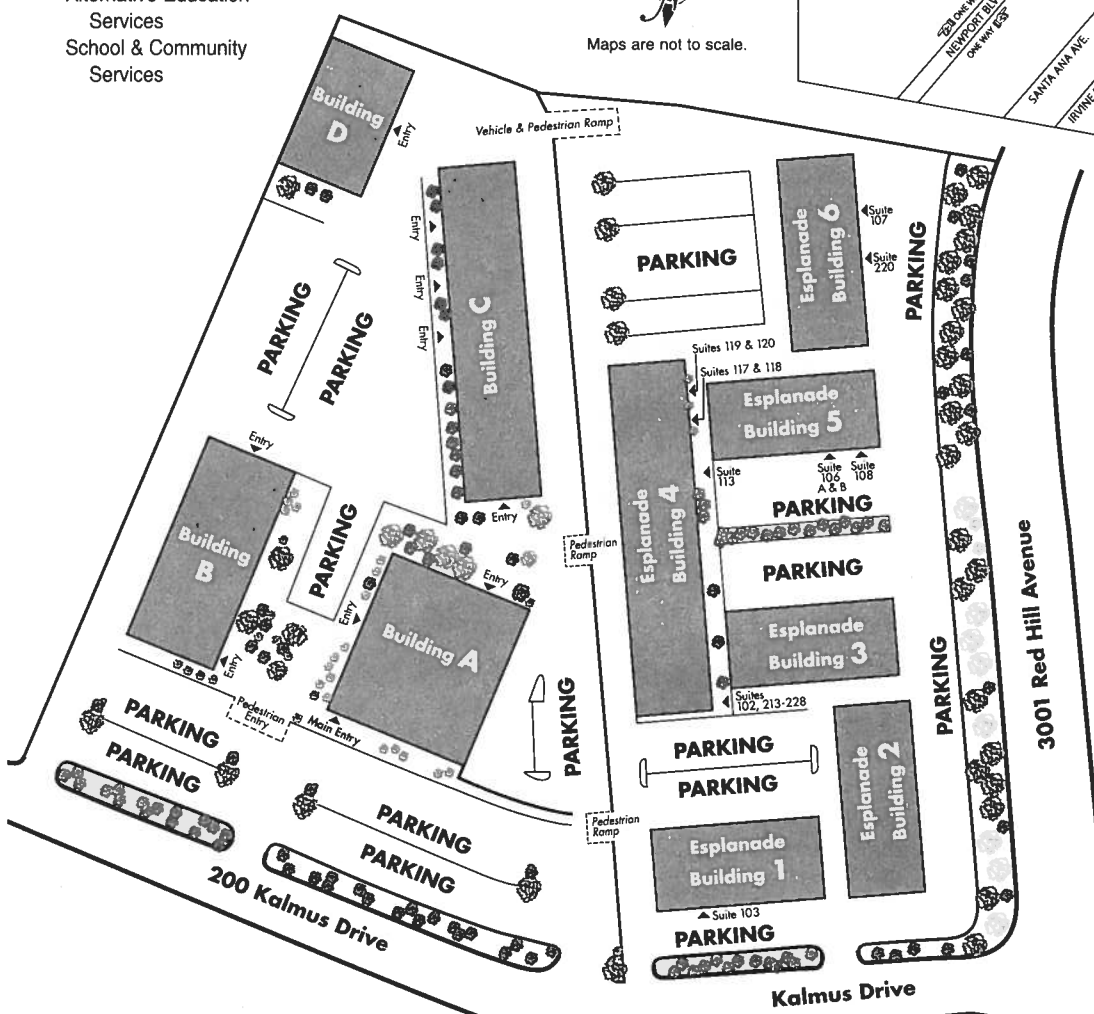
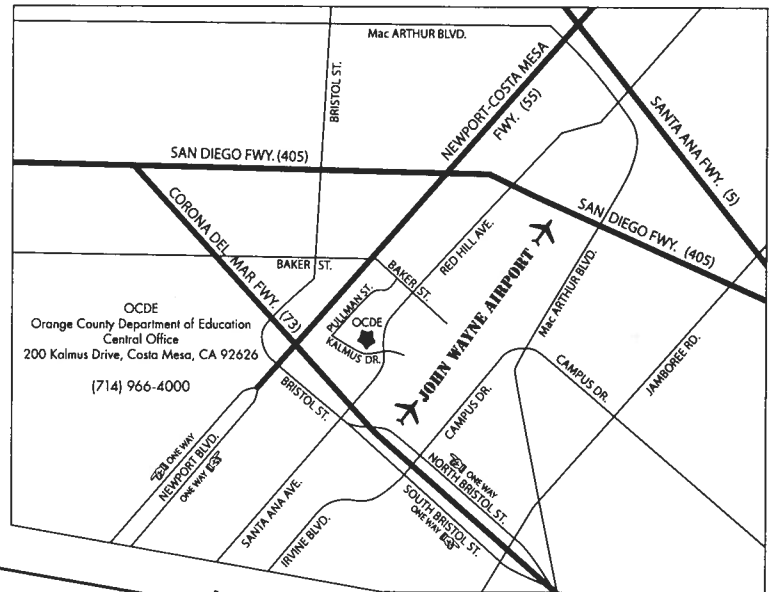
- Instructional Services
- Alternative Education Services
- School & Community Services

### Building D

- Conference Center



Maps are not to scale.



- Esplanade Building 1**  
Suite 103  
CalSTRS Counseling
- Esplanade Building 4**  
Suites 102, 213-228  
Instructional Services  
Learning Support
- Suite 113  
Child Care Services
- Suites 117 & 118  
LRDC (Learning Resources Display Center)
- Suites 119 & 120  
ILD (Institute for Leadership Development)
- Esplanade Building 5**  
Suite 106  
Conference Rooms
- Suite 108  
School & Community Services
- Esplanade Building 6**  
Suite 107  
OAEA (Office of Assessment Evaluation and Accountability)
- Suite 220  
Instructional Services  
Learning Support